

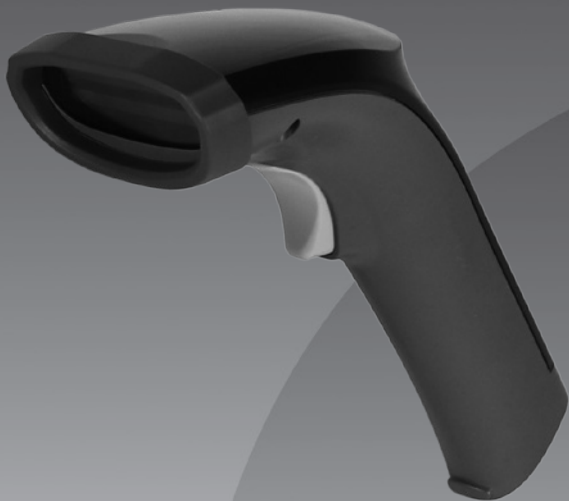


## Leitor Argox AR-3201

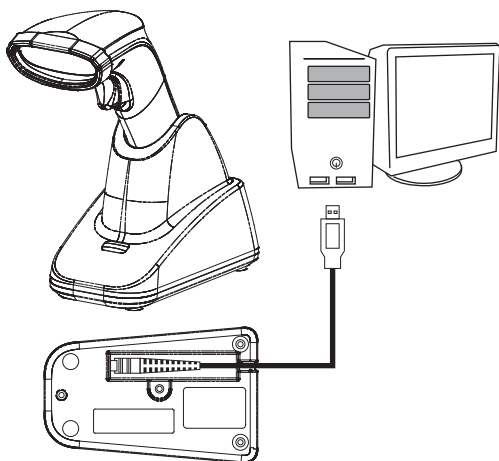
O scanner Argox AR-3201 foi projetado para operações diárias de pequenas e médias empresas. Em um ambiente de trabalho intensivo, é necessário um leitor confiável para capturar dados com facilidade e sem erros.

# AR-3201

## Quick Start Guide



# How to set up your scanner



1. Connect the USB or the RS-232 cable to your cradle. Lay the cable into the notch on the cradle edge.
2. Connect the USB or the RS-232 cable to your computer.

**Note 1** If you've purchased the USB pack, you can charge your scanner by connecting the USB cable to your computer.

**Note 2** If you've purchased the RS-232 pack, connect the power supply to the RS-232 cable and the wall outlet.

Charging by	Full Charge Time
Power Supply	4.5hours
USB Cable	6.5hours

- Place your scanner on your cradle to charge it until full. You have to charge over 16 hours at the first time. (cradle's LED glows green)
- Scan **Barcode** at the bottom of your cradle to establish the connection between your scanner and cradle.
- To test your scanner, start a text processing program like Notepad or Word. Scan a bar code and see if the data can be sent to your computer. If it's successful, you'll hear a beep and the bar code data shows in the program.

## Status Light

Status	Scanner LED	Cradle LED
Scanner Connected	Flash <b>blue</b> at 1-second intervals	Flash <b>blue</b> at 1-second intervals
Charging	Solid red	Flash green every second
Battery Full	Off	Solid green

## Interface Selection

RS-232



USB HID



**USB Virtual COM**



RS-232/USB HID \*

Auto detection



(\*) Default

## Scan Mode

Good-read off



Momentary \*



Alternate



Timeout off



Continue



Test only



Auto Sensing



(\*) Default

# Keyboard Layout

USA \*



Belgium



Danish



France



Germany



Italian



Portuguese



Spanish



Swedish



Switzerland



UK



Latin American



Japanese

(\*) Default



# RS-232 Baud Rate Setting

2400 bps



4800 bps



9600 bps



19200 bps



38400 bps



57600 bps



115200 bps\*



(\*) Default

## RS-232 Flow Control

None \*



RTS/CTS



Xon/Xoff



ACK/NAK



(\* ) Default

## RS-232 Parity Setting

None \*



Odd



Even



(\* ) Default

## RS-232 Data Bit Setting

8 bits \*



7 bits



(\* ) Default



## Suffix Characters Setting (HID & USB )

Enter\*



Tab



None



(\* ) Default

## Bar Codes

Scan the following bar codes to turn them on.

Industrial 2 of 5



Matrix 2 of 5 Eur



Standard 2 of 5



Codabar



Code 93



Code 11



## Bar codes - Continued

MSI/Plessey



UK/Plessey



Telepen



China Post



Italian Pharmacode



GS1 Databar

Limited



GS1 Databar

Ominidirectional



GS1 Databar

Expanded



Standard



Code 128

GS1-128



**Note** Bar codes not listed in the table are turned on by default.

**Test Symbolgies** (Bar code samples marked with asterisk (\*) are turned on initially.)

**CODABAR-PARA**



**a154987a**

**CODE-11 PARA**



654215

**CODE-128 PARA\***



258963

**CODE-39 PARA\***



\*741258\*

**CODE-93 PARA**



951263

**EAN-13 PARA\***



7 534539 789813

**STANDARD-25 PARA**



65978

**CODE-16K**



87549

**EAN-8 PARA\***



9456 2156

**INDUSTRIAL-25 PARA**



04976

**UPCE PARA\***



0 095601 1

**INTERLEAVED-25 PARA\***



46820

**MATRIX 25 PARA**



4563535663

**MSI/PLESSEY PARA**



754268

**UPCA PARA\***



5 73648 64734 5

**UK/PLESSEY PARA**



64872

**GS1**



## Parameters



\*\$%+PRO\*

Program



\*!BS\*

### Bar code settings

It shows the current settings of all bar codes.



\*!BU\*

### Unique parameters

It shows the current values of the common properties of all bar codes.



\*!SY\*

### System parameters

It shows current system settings of your scanner, such as interface selection, RS-232, indicator, transmission and the scan mode.



\*!ST\*

### String settings

It shows all settings of strings, such as prefix, suffix, preamble, postamble and string groups.



\*%\$\$\*

Exit

## **Firmware version**

It shows the firmware version of your scanner.



## **Reset your scanner**

Scan the following bar code to reset your scanner.







# ARGOX

a  company

[www.argox.com](http://www.argox.com)



49-AR101-021

Part No. 49-AR101-021  
Publish Date: Jun 2019