



Coletor de Dados Honeywell Dolphin 6000

Além de fornecer a funcionalidade de um telefone celular, o Dolphin 6000 oferece características avançadas de produtividade voltada para as forças de trabalho em diversas verticais de nosso mercado.





Dolphin™ 6000

Quick Start Guide

Aller à www.honeywellaidc.com pour le français.

Vai a www.honeywellaidc.com per l'italiano.

Für Deutsch gehe zu www.honeywellaidc.com.

Ir a www.honeywellaidc.com para español.

Para Português, acesse www.honeywellaidc.com.br.

Перейти на русскоязычный сайт www.honeywellaidc.com.

Pro češtinu jdi na www.honeywellaidc.com.

Pre slovenčinu choď na www.honeywellaidc.com

如要到中国 www.honeywellaidc.com (简体)。



Out of the Box

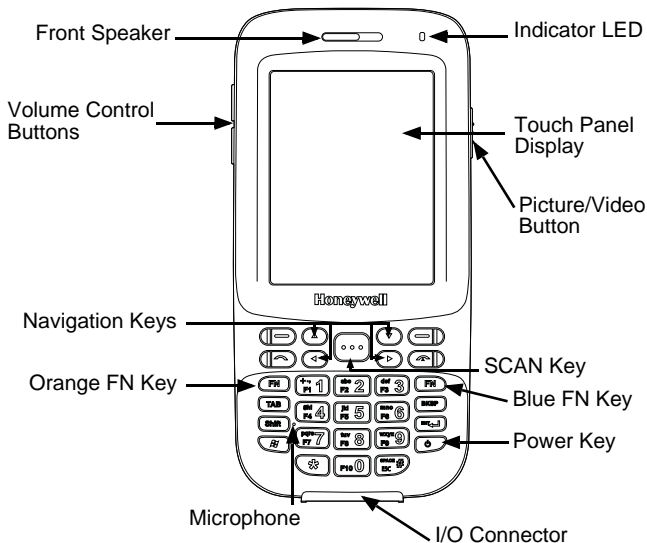
Verify that your carton contains the following items:

- Dolphin 6000 mobile terminal
- Main battery pack (3.7V, Li-ion)
- Quick Start Guide

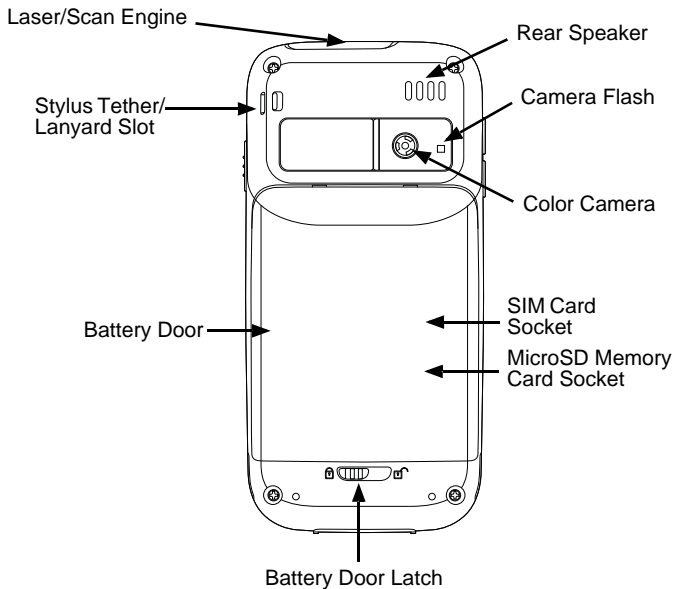
Note: If you ordered accessories for your terminal, verify that they are also included with the order.

Be sure to keep the original packaging in case you need to return the Dolphin terminal for service.

Front Panel

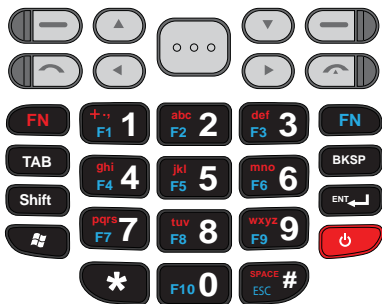


Back Panel



Keyboard

29-key Alphanumeric Keyboard



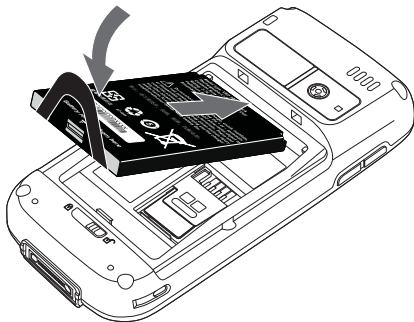
Installing the Battery Pack



Ensure all components are dry prior to mating terminals/batteries with peripheral devices. Mating wet components may cause damage not covered by the warranty.

The Dolphin 6000 is shipped with the battery packaged separately from the terminal. Perform the following steps to install the battery.

1. Slide the latch to unlock the battery door.
2. Open the battery door.
3. Insert the battery into the battery well with the contacts facing the front of the unit.



4. Re-install the battery door.

Note: Install the battery door before powering the terminal.

5. Connect the terminal to one of the Dolphin 6000 charging peripherals to charge the battery pack.

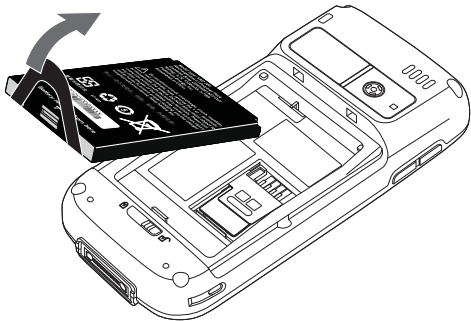


We recommend use of Honeywell Li-Ion battery packs. Use of any non-Honeywell battery may result in damage not covered by the warranty.

Removing the Battery Pack

Perform the following steps to remove the battery.

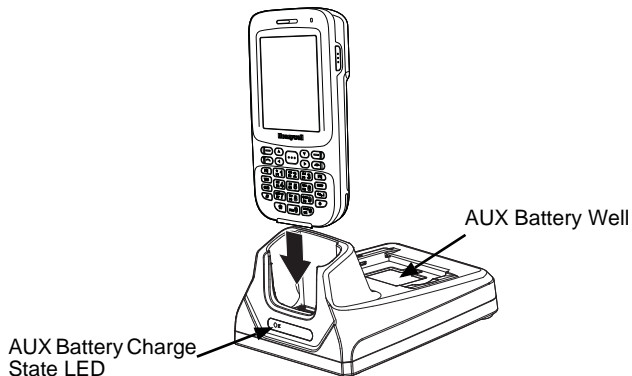
1. Slide the latch to unlock the battery door.
2. Open the battery door.
3. Remove the battery by lifting the tab on the battery.



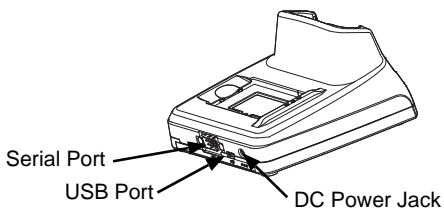
Charging the Dolphin

Dolphin terminals ship with the battery significantly discharged of power. Charge the battery pack with a Dolphin charging device for a minimum of 4 hours before initial use.

HomeBase



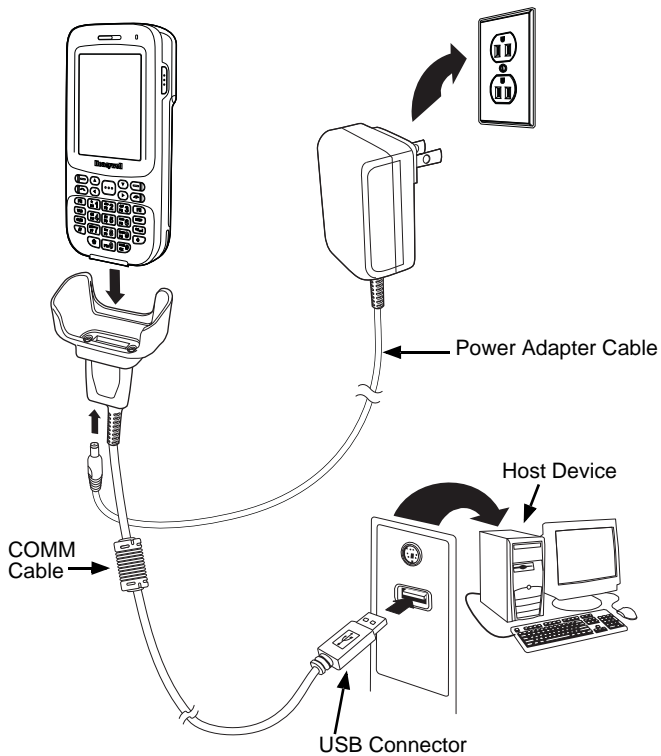
HomeBase Back Panel



HomeBase Battery Well LED Indicators

Green	Full (completed charge)
Red	Fast charge
Orange	Pre-charge (low battery status)
Orange - Blinking	Battery cannot be charged
Off	No battery, fault or over temperature

Charging/Communication Cable



Turning Device On/Off

To turn the Dolphin 6000 terminal on:

1. Press and hold the **Power** button for 3 seconds.

Note: Turning the terminal off is the equivalent to a hard boot.

1. To turn the terminal off, press the **Power** button for 5 seconds.
2. Tap **OK** to shutdown.

Suspending/Resuming Terminal

To put the device into Suspend mode when the terminal is powered on:

1. Press and release the power button.
2. To resume from the Suspend mode, press and release the **Power** button.

ActiveSync Communication

To synchronize data (e.g., e-mail, contacts, and calendar) between the terminal and the host workstation (PC):

1. ActiveSync® (version 4.5 or higher) or Windows® Mobile Device Center (WDMC) must be installed on your PC. You can download the most current version of ActiveSync or WDMC from the [Microsoft Web site](http://go.microsoft.com/fwlink/?LinkId=147001) (<http://go.microsoft.com/fwlink/?LinkId=147001>).

Note: Dolphin terminals ship with ActiveSync already installed. ActiveSync on your Dolphin terminal works with WDMC on PCs running Windows Vista or Windows 7 and with ActiveSync on PCs running Windows XP.

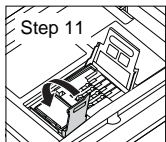
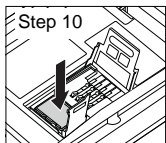
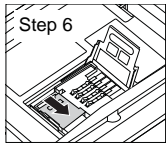
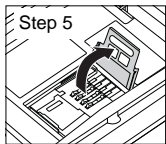
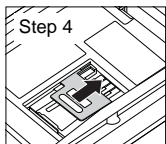
2. The Dolphin terminal and PC must be configured for the same communication type.
3. Connect the terminal to the PC (using a Dolphin peripheral) to initiate communication. For additional information on ActiveSync or Windows Mobile Device Center visit www.microsoft.com.



We recommend use of Honeywell peripherals, power cables, and power adapters. Use of any non-Honeywell peripherals, cables, or power adapters may cause damage not covered by the warranty.

Installing a Memory Card

1. Power down the terminal.
2. Unlock and remove the battery door.
3. Remove the battery.
4. Slide the latch toward the top of the terminal to unlock the SIM card.
5. Lift the SIM card latch to reveal the SIM card.
6. Remove the SIM card to reveal the memory card latch.
7. Unlock the memory card latch by sliding the latch away from the serial number label located in the battery well.
8. Lift the latch to expose the MicroSDHC socket.
9. Remove and discard the SD card blank and replace it with the SD card you are installing.
10. Insert a MicroSD or MicroSDHC card into the socket aligning the corner on the card with the corner of the socket.
11. Close and lock the memory card latch by sliding the latch toward the serial number label.
12. If you want to install a SIM card, insert it into the SIM card socket (see [Installing a SIM Card](#)).
13. Close and lock the SIM card latch by sliding the latch towards the bottom of the terminal.
14. Install the battery.
15. Install and lock the battery door.
16. Power on the terminal.

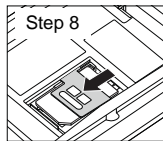
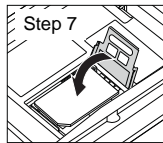
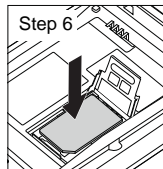
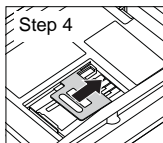


Installing a SIM Card

1. Power down the terminal.
2. Unlock and remove the battery door.
3. Remove the battery.
4. Slide the latch toward the top of the terminal to unlock the SIM card.
5. Lift the SIM card latch.
6. Insert the SIM card into the SIM card socket.

Note: Make sure the interface on the card is connected to the SIM card interface in the socket; align the corner of the card with the corner of the socket.

7. Close the SIM card latch.
8. Lock the SIM card latch by sliding the latch toward the bottom of the terminal.
9. Install the battery.
10. Install and lock the battery door.
11. Power on the terminal.




Using the Scan Engine

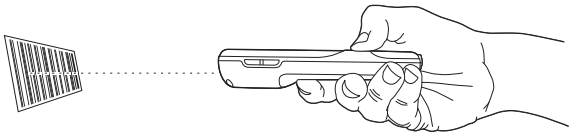
Point the aiming beam at a bar code. The aiming beam must align with the bar code for the best results. Holding the terminal between 4-10 inches (10-25 cm) from a bar code is recommended.

Note: The touch panel display can be activated by using the stylus (included with the terminal) or your finger. To activate the display, open a file, or select a menu, use the tip of the stylus to tap the touch panel display or gently press the touch panel with your finger.

1. Tap  > **Demos** > **Scan Demo**.

*Note: You may activate the Vibrate option by selecting  > **Demos** > **Scan Demo** > **Setup** > **Vibrate**. The device vibrates each time a bar code is decoded.*

2. Point the Dolphin terminal at the bar code.



3. Project the aiming beam by pressing and holding the SCAN key.
4. Center the aiming beam over the bar code. For optimum performance, avoid reflections by scanning the bar code at a slight angle. To decode stacked bar codes (e.g., PDF417), slowly move the beam up or down over the code.
5. When the bar code is successfully decoded, the terminal LED flashes green and the terminal beeps. The bar code information is entered into the application in use.


Aiming Beam

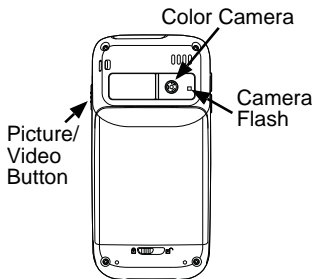
The aiming beam is narrower when you hold the terminal closer to a bar code and the aiming beam is wider when you hold it farther from the bar code.

The aiming beam must be aimed closer to symbologies that have smaller bars or elements (mil size). The aiming beam must be aimed farther from symbologies that have larger bars or elements (mil size).



Using the Color Camera

1. Tap  > **Pictures & Videos > Camera.**
2. Point the camera lens at an object.
3. Adjust the position of the camera lens to make sure that the object is showing on the screen.
4. Press the **Picture/Video** button on the side of the terminal to take a picture.



Technical Assistance

Contact information for technical support, product service, and repair can be found at www.honeywellaidc.com.

User Documentation

For localized versions of this document, and to download the User's Guide, go to www.honeywellaidc.com.

Patents

For patent information, please refer to www.honeywellaidc.com/patents.

Limited Warranty

Refer to www.honeywellaidc.com/warranty_information for your product's warranty information.

Disclaimer

Honeywell International Inc. ("HII") reserves the right to make changes in specifications and other information contained in this document without prior notice, and the reader should in all cases consult HII to determine whether any such changes have been made. The information in this publication does not represent a commitment on the part of HII.

HII shall not be liable for technical or editorial errors or omissions contained herein; nor for incidental or consequential damages resulting from the furnishing, performance, or use of this material.

This document contains proprietary information that is protected by copyright. All rights are reserved. No part of this document may be photocopied, reproduced, or translated into another language without the prior written consent of HII.

© 2011-2012 Honeywell International Inc. All rights reserved.

Web Address: www.honeywellaidc.com

