



28-6, Gajangsaneopdong-ro,
Osan-si, Gyeonggi-do, 18103, Republic of Korea
TEL : +82-31-8077-5000 / FAX : +82-31-624-5310
<http://www.miniprinter.com>

sewoo

LABEL MAKER MANUAL

Rev.B 08 / 2020

Aroot Co., Ltd.

The manual and product are protected by copyright.




Table of Contents

1. How to use	2
2. Menu	3
2-1. File	3
2-1.1 Print	4
2-2. Edit	7
2-3. Command	8
2-3.1. Barcode	9
2-3.2. PDF417	11
2-3.3. Box	12
2-3.4. Line	13
2-3.5. Inverse Rectangle	14
2-3.6. PCX	16
2-3.7. Text	17
2-4. Printer	19
2-4.1. Printer Status	20
2-4.2. Port Setup	24
2-4.3. Read Files	25
2-4.4. Send Label File	26
2-4.5. Send Picture	28
2-5. Graphics	31
2-5.1. Image Conversion	31

1. How to use

- 01 Install and run the printer driver and Label Maker.
- 02 Make page settings in the Page Setup menu. (See Page Setup).
- 03 Proceed with Label Design and click the Print menu. (Refer Figure 1)
- 04 After setting each print option, press the print button to print.
(Refer to Figure 2 and Print).

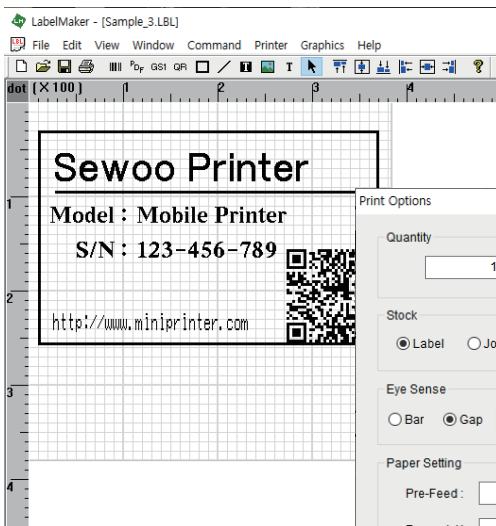


Figure 1

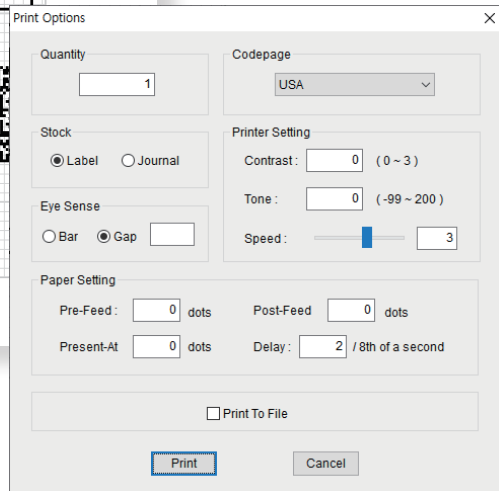
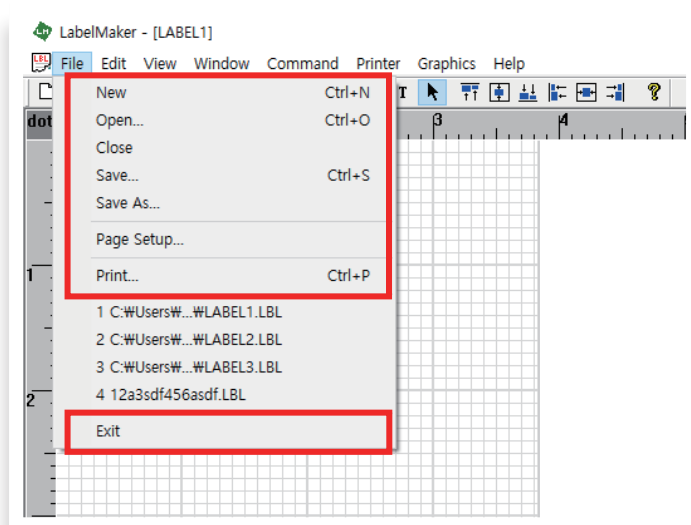


Figure 2

2. Menu

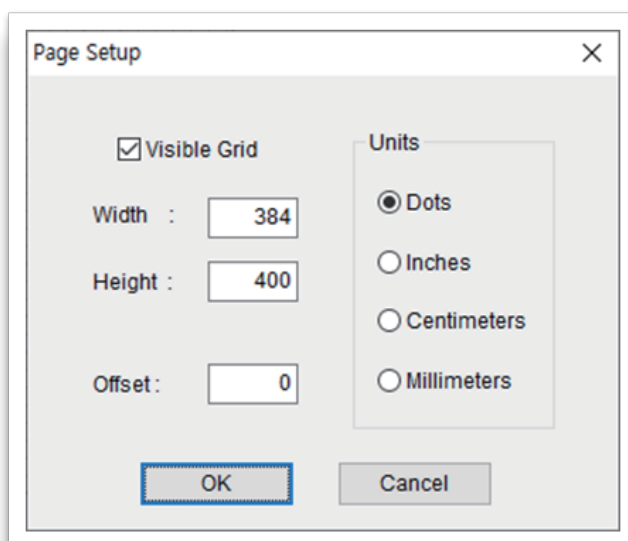
2-1. File



Menu	Description
New	Open a blank Label window
Open	Open saved label file
Close	Close the current Label window
Save	Save the currently edited Label (*.LBL)
Save As	Save the currently edited Label for new name
Page Setup	Set the Label Size option
Print	Set the Print Option
Exit	Exit Program

2. Menu

2-1.1 Print



Menu	Description
Visible Grid	Set the presence or absence of grid lines on the label
Width	Set Label width size
Height	Close the current Label window
Units	Set Label Unit ※ Spacing of grid lines in units <ul style="list-style-type: none"> - Dots: 10 dots - Inches: 0.1 inch - Centimeters: 0.1 cm - Millimeters: 1 mm
Offset	Exit Program

2. Menu

Print Options

Quantity:

Codepage:

Stock: ☒ Label ☐ Journal

Eye Sense: ☐ Bar ☒ Gap

Printer Setting:

- Contrast: (0 ~ 3)
- Tone: (-99 ~ 200)
- Speed:

Paper Setting:

- Pre-Feed: dots
- Post-Feed: dots
- Present-At: dots
- Delay: / 8th of a second

☐ Print To File

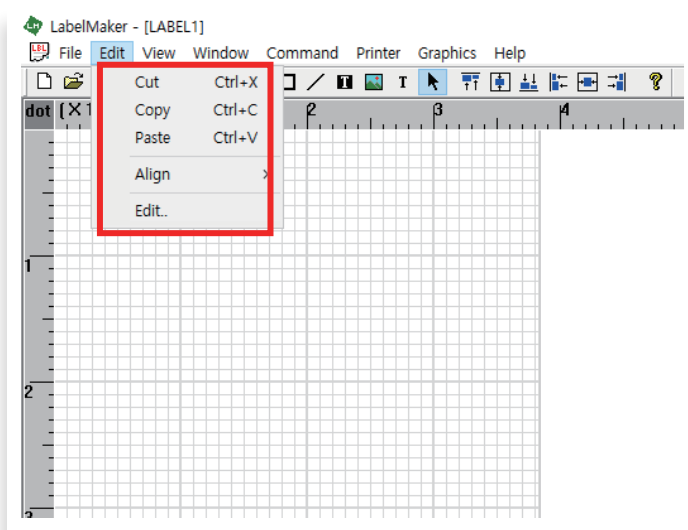
Menu	Description
Quantity	Set the number of Label output.
Codepage	Set the CharacterSet to apply to the printer.
Stock	Set Label type.
Eye Sense	Set Label Sensor type.(Bar, Gap)
Printer Setting	<ul style="list-style-type: none"> Contrast: Set Contrast.(Range: 0 ~ 3) Brightest at 0. Tone: Set Tone.(Range: -99 ~ 200). Brightest at -99. Speed: Set Printer motor speed.(Range: 0 ~ 5) Slowest at 0.

2. Menu

Menu	Description
Printer Setting	<ul style="list-style-type: none">– Pre-Feed: Set the feed value before printing. (Journal mode only)– Post-Feed: Set the feed value after printing. (Journal mode only)– Present-At: Set the advance value for easily cutting out the paper after printing. Proceed back to the original position before the next label is printed.– Delay: Set the delay time to cut the paper after printing
Print To File	Save Label as file without outputting

2. Menu

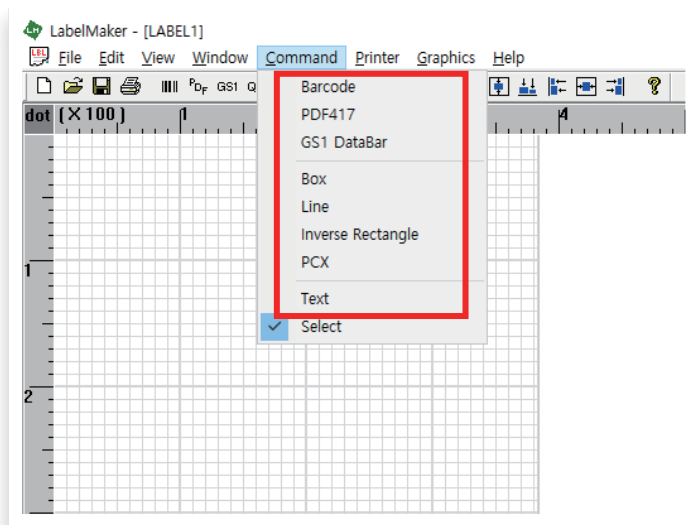
2-2. Edit



Menu	Description
Cut	'Cut' the selected object.
Copy	Copies the selected object.
Paste	'Paste' the object you 'cut' or 'copy'.
Align	Align the selected objects to the proper position.
Edit	Modifies the properties of the selected object

2. Menu

2-3. Command



Menu	Description
Barcode	Draw a one-dimensional barcode
PDF417	Draw PDF417 (two-dimensional barcode)
Box	Draw a Rectangle
Line	Draw a straight line
Inverse Rect	Draw a rectangle to invert the background
PCX	Draw images with PCX and BMP extensions
Text	Select a printer internal font to print a string

2. Menu

2-3.1 Barcode

Menu	Description
Input Length	The selected barcode indicates the length of data that can be processed.
Checksum	<p>Displays the checksum processed by the selected barcode.</p> <p>※ Spacing of grid lines in units</p> <ul style="list-style-type: none"> – Dots: 10 dots – Inches: 0.1 inch – Centimeters: 0.1 cm – Millimeters: 1 mm

2. Menu

Menu	Description
Starting Position	Set the starting point coordinates of the selected barcode.
Size of Narrow Bar	Set the width and height of the smallest bar.
Ratio	Sets the ratio between the narrowest bar and the wide bar
Orientation	Set the rotation angle of the barcode
Barcode Data	Enter the data value to display as a barcode
Human Readable Information(HRI)	※ Text that shows data of barcode <ul style="list-style-type: none"> – Font Name: Type of font to display HRI – Font Size: Size of font to display HRI – Offset text away from Barcode: Set the distance between the barcode and the HRI
Alignment	Set up the barcode alignment (Left, Center, Right)

2. Menu

2-3.2 PDF417

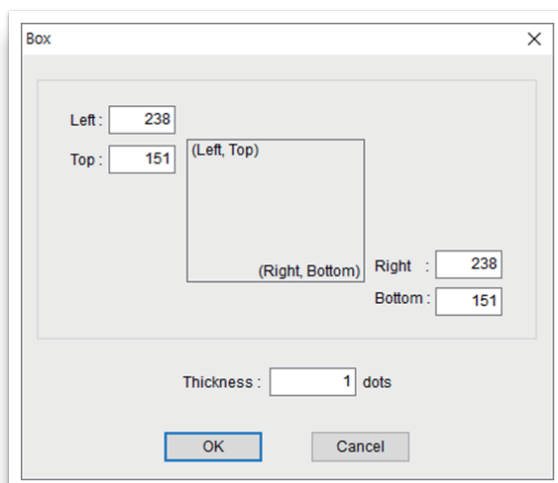
The screenshot shows a 'PDF417' dialog box with the following settings:

- Option:** XD: 2 dots, Columns: 3, YD: 6 dots, Security: 1
- Orientation:** Horizontal (selected), Vertical (unselected)
- Starting Position:** X: 249 dots, Y: 144 dots
- Text:** An empty text input area.

Menu	Description
XD	Set the width of the smallest bar. (Range 1 ~ 32)
YD	Sets the height of the smallest bar. (Range 1 ~ 32)
Columns	Set the number of columns of data. (Range 1 ~ 30)
Security	Set the level for how many errors are detected and repaired. (Range 0 ~ 8)
Orientation	Select whether to print the barcode horizontally or vertically.
Starting Position	Set the starting point coordinates of the barcode.
Text	Enter the data to output as a barcode.

2. Menu

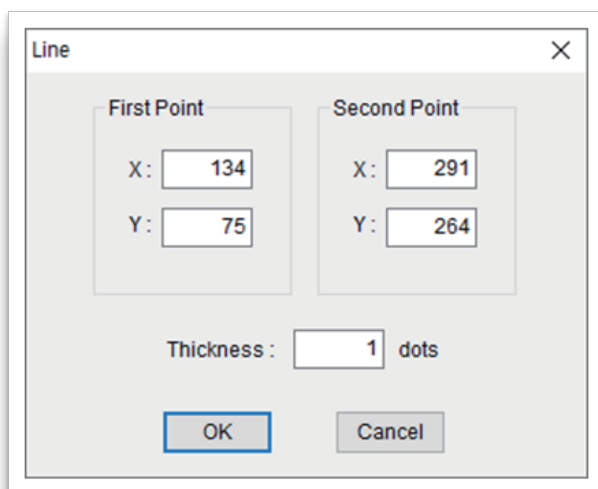
2-3.3 Box



Menu	Description
Left	Sets the X coordinate of the lower left corner of the rectangle.
Top	Sets the Y coordinate of the lower left corner of the rectangle.
Right	Sets the X coordinate of the lower right corner of the rectangle.
Bottom	Sets the Y coordinate of the lower right corner of the rectangle.
Thickness	Sets the thickness of the rectangle outline.

2. Menu

2-3.4 Line



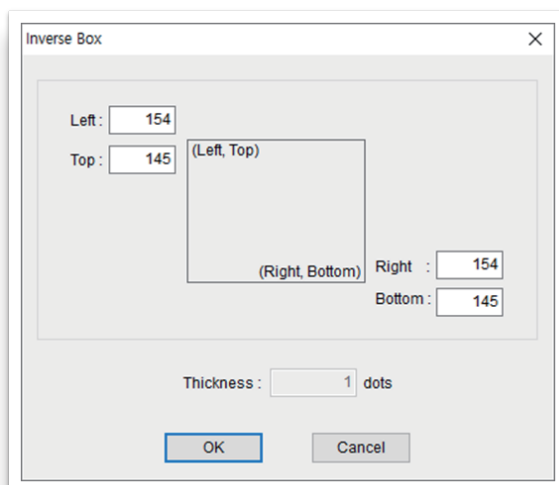
The image shows a 'Line' dialog box with a close button (X) in the top right corner. It contains two sections: 'First Point' and 'Second Point'. The 'First Point' section has input fields for 'X:' (value 134) and 'Y:' (value 75). The 'Second Point' section has input fields for 'X:' (value 291) and 'Y:' (value 264). Below these sections is a 'Thickness:' label followed by an input field (value 1) and the text 'dots'. At the bottom are 'OK' and 'Cancel' buttons.

Field	Value
First Point X	134
First Point Y	75
Second Point X	291
Second Point Y	264
Thickness	1 dots

Menu	Description
First Point X	Sets the X coordinate of the start point of the straight line
First Point Y	Sets the Y coordinate of the start point of the straight line
Second Point X	Sets the X coordinate of the end point of the straight line
Second Point Y	Sets the Y coordinate of the end point of the straight line.
Thickness	Sets the thickness of the straight line

2. Menu

2-3.5 Inverse Rectangle



Menu	Description
Left	Sets the X coordinate of the upper left corner of the rectangle.
Top	Sets the Y coordinate of the upper left corner of the rectangle.
Right	Sets the X coordinate of the upper Right corner of the rectangle.
Bottom	Sets the Y coordinate of the upper Right corner of the rectangle.

2. Menu

How to use

- 01 Enter text from the Text menu. (Figure 1)
- 02 Click the Inverse Rectangle menu and drag it over the entered text.
- 03 Press OK to confirm that it is applied as shown in Figure 2.

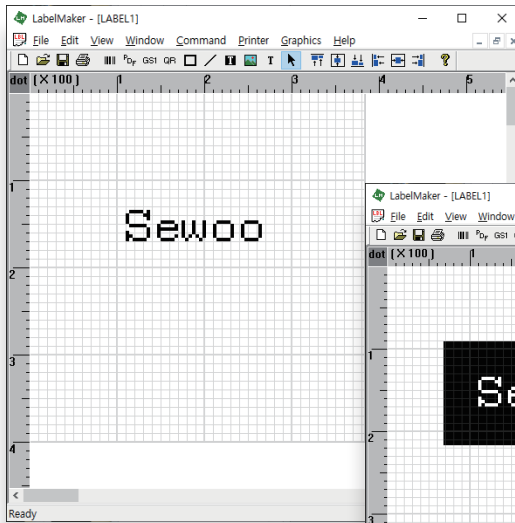


Figure 1

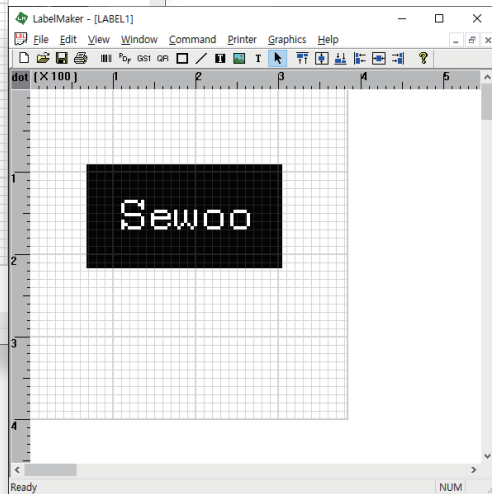
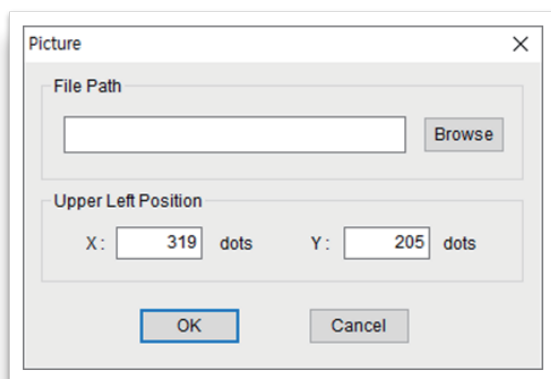


Figure 2

2. Menu

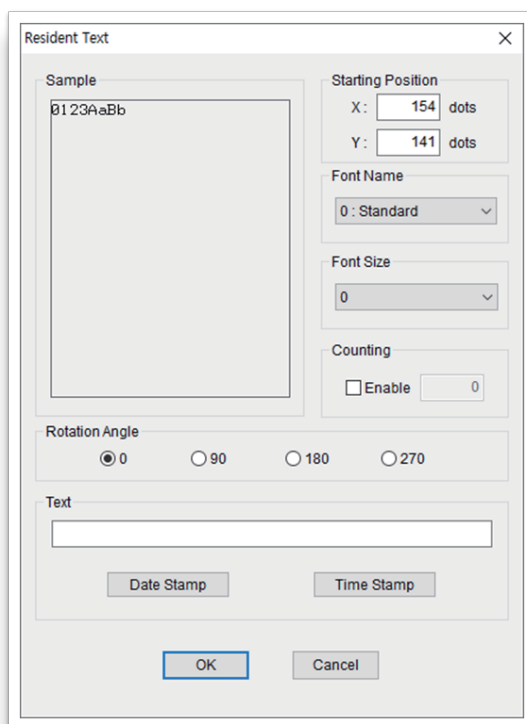
2-3.6 PCX



Menu	Description
Path	Sets the path of PCX file to draw
Upper Left Position	Sets the top left coordinate of the selected PCX

2. Menu

2-3.7 Text



The 'Resident Text' dialog box is used for configuring text output. It features a 'Sample' preview area showing '0123AaBb'. The 'Starting Position' section includes input fields for X (154) and Y (141) in dots. The 'Font Name' is set to 'Standard' and 'Font Size' is set to '0'. The 'Counting' section has an 'Enable' checkbox and a value of '0'. The 'Rotation Angle' section has radio buttons for 0, 90, 180, and 270 degrees, with '0' selected. The 'Text' section has a text input field and 'Date Stamp' and 'Time Stamp' buttons. 'OK' and 'Cancel' buttons are at the bottom.

Resident Text

Sample

0123AaBb

Starting Position

X: 154 dots

Y: 141 dots

Font Name

0: Standard

Font Size

0

Counting

☐ Enable 0

Rotation Angle

☒ 0 ☐ 90 ☐ 180 ☐ 270

Text

Date Stamp Time Stamp

OK Cancel

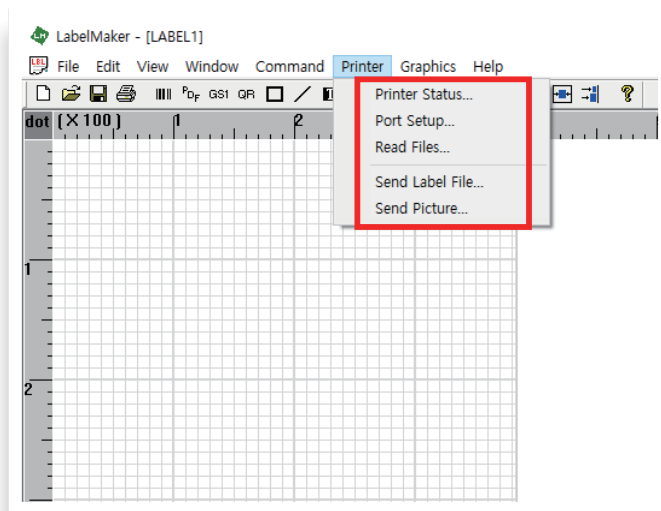
Menu	Description
Starting Position	Sets the starting point coordinate of the string to output
Font Name	Select the type of internal font

2. Menu

Menu	Description
Font Size	Select the size of internal font.
Counting	If the data to be entered is numeric, the data is automatically incremented and decremented when multiple labels are taken. (* Input data must contain 0. ex- 001)
Rotation Angle	Sets the angle to rotate the string.
Text	Enter the data of the text to output.
Date Stamp	Print the date set on the printer. Alternatively, you can type! < DATE in the Text input window
Time Stamp	Print the time set in the printer. Alternatively, you can type! < TIME in the Text input window

2. Menu

2-4. Printer



Menu	Description
Printer Status	Shows the current status of the printer
Port Setup	Set the communication port of the printer
Read Files	Shows a list of files in printer internal memory
Send Label	After selecting a file, it can be sent to the printer for printing or stored in the printer's internal memory
Send Picture	Select an image file and send it to the printer. The transferred images can be output through the Picture menu

2. Menu

2-4.1 Printer Status

Version)

Printer Status

Version Status Battery Label / Flash

SEWOO LK-P34 v1.37 09/10/18

Application Version v1.30

Application Checksum 7763

ROM Version LKP34RV204

ROM Checksum c2f9

Date 12-04-2019 Time 15:08:03

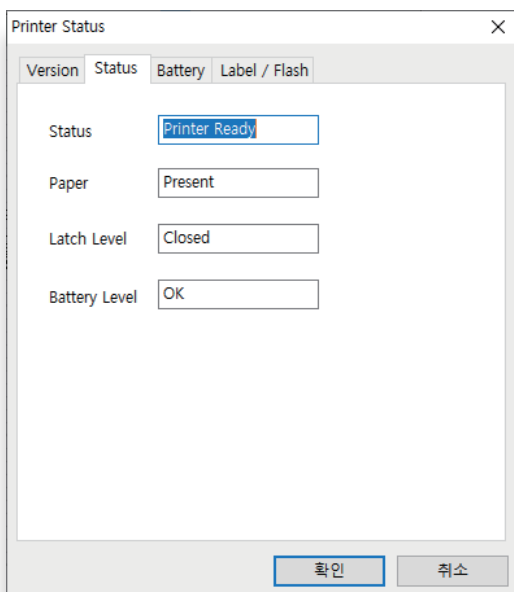
Set Date and Time Send Printer Date and Time

확인 취소

Menu	Description
Info	Displays printer model and firmware version information.
Application Version	Displays firmware application version.
Date & Time	Displays the current date and time set on the printer.
Set Date and Time	Displays the date and time currently set on the PC.
Send Printer Date and Time	Send and set the current date and time to the printer.

2. Menu

Status)



Menu	Description
Status	Display printer status. (Printer Reset/Printer Ready)
Paper	Displays the paper status of the printer. (Out of paper/Present)
Latch Level	Displays the cover status of the printer. (Open/Closed)
Battery Level	Displays the battery status of the printer. (Low Battery/OK)

2. Menu

Battery)

Printer Status

Version Status **Battery** Label / Flash

Battery Level

Low Battery Warning Level

Low Battery Shutoff Level

Low Battery Timeout seconds

No Activity Timeout seconds

Menu	Description
Battery Level	Displays the ADC level of the current battery voltage.
Low Battery Warning Level	Set the battery level to display a low battery indication.
Low Battery Shutoff Level	Set the battery level at which power turns off.
Low Battery Timeout	Set to turn off after a few seconds when detecting low battery.
No Activity Timeout	Set to turn off after a few seconds when printer doesn't work.

2. Menu

Label/Flash)

Printer Status

Version Status Battery Label / Flash

Label

User Label Count 326 Reset

Total Label Count 326

Print Length 83 meters

Label Length 300 dots

Flash

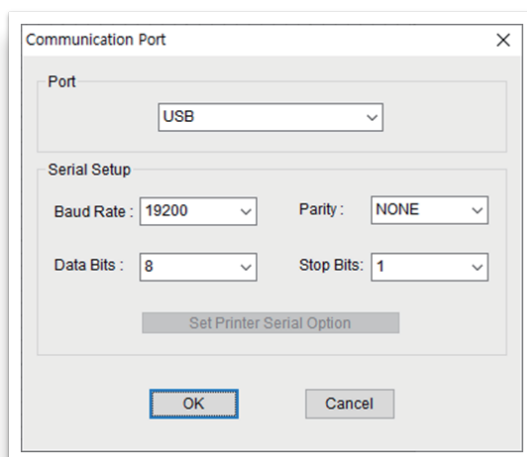
Flash Write Count 0

확인 취소

Menu	Description
User Label Count	Shows the number of labels printed. (Can be reset)
Total Label Count	Displays the number of times the label has been printed. (Non-initializable)
Print Length	Display the total length printed
Label Length	Displays the length of the most recently printed label.
Flash Write count	Displays the number of writes to flash memory.

2. Menu

2-4.2 Port Setup



Communication Port

Port

USB

Serial Setup

Baud Rate : 19200 Parity : NONE

Data Bits : 8 Stop Bits : 1

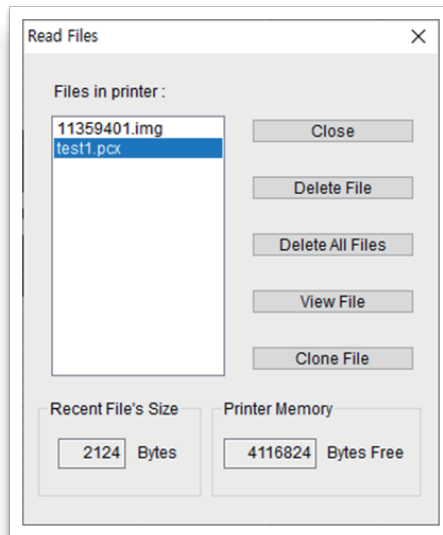
Set Printer Serial Option

OK Cancel

Menu	Description
Info	Displays printer model and firmware version information.
Application Version	Displays firmware application version.
Date & Time	Displays the current date and time set on the printer.
Set Date and Time	Displays the date and time currently set on the PC.
Send Printer Date and Time	Send and set the current date and time to the printer.

2. Menu

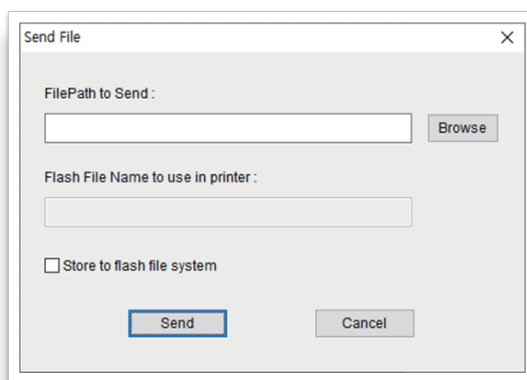
2-4.3 Read Files



Menu	Description
File in Printer	Displays a list of files in printer flash memory.
Delete & Delete All File	Delete the selected file and all files.
View File	Shows the contents of the selected file. The value is displayed normally only for LBL files.
Clone File	Copies the selected file and saves it to the new path selected by the user.
Close	Close the Read Files window.

2. Menu

2-4.4 Send Label File



Menu	Description
File to Send	Select the file you want to save to the printer flash memory.
Flash File Name to use in printer	When saving to the printer memory, set the file name to save. However, the file name cannot exceed 12 characters including the extension.
Store File flash file system	Select to save the file to the printer flash memory without outputting the file.

2. Menu

How to use

- 01 Open the LBL file. (Figure 1)
- 02 If you press the Send button without checking Store to flash file system, it will be printed out directly to the printer.
- 03 If you check Store to flash file system, the window to set the file name is activated, and when you press the Send button, it is saved in the printer flash memory. (Figure 2)

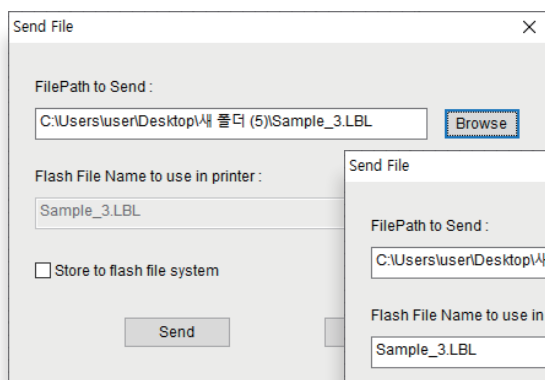


Figure 1

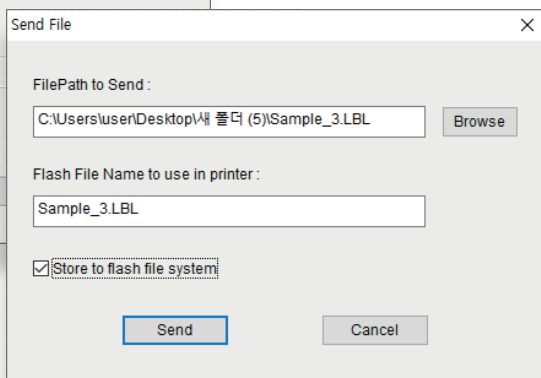
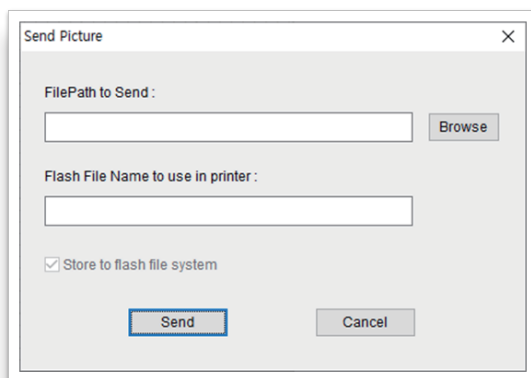


Figure 2

2. Menu

2-4.5 Send Picture



Menu	Description
File to Send	Select the file you want to save to the printer flash memory.
Flash File Name to use in printer	Set the file name to save. However, the file name cannot exceed 12 characters including the extension.
Store File flash file system	Image transmission is always checked so that it can only be stored in the printer flash memory.

2. Menu

How to use

- 01 Change the image to PCX in the Image Conversion menu to change to the printable image extension. (Figure 1)
※ Only BMP and PCX can be printed.
- 02 Select the changed PCX file from the Send Picture menu and press Send to save it to the printer flash memory. (Figure 2)

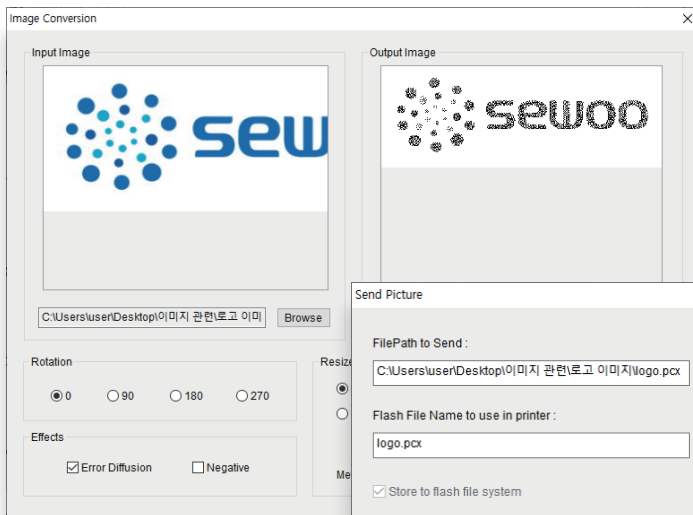


Figure 1

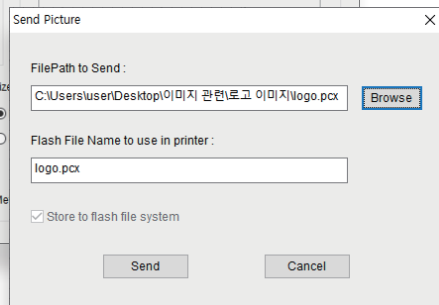


Figure 2

2. Menu

03 Select a PCX file from the Picture menu. (Figure 3)

※ The file name must be the same as the file name used when sending the picture.

04 Click Print menu and set the value. Press Print to print. (Figure 4)

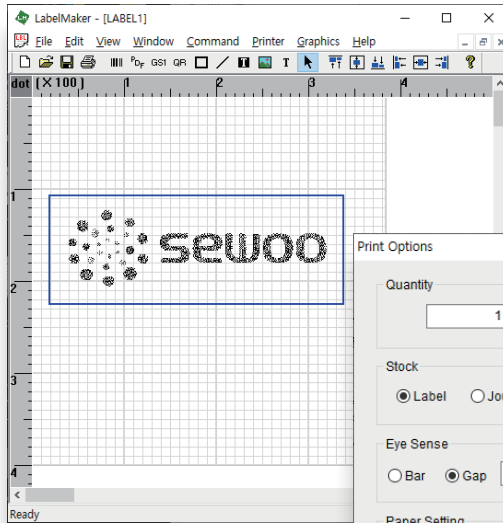


Figure 3

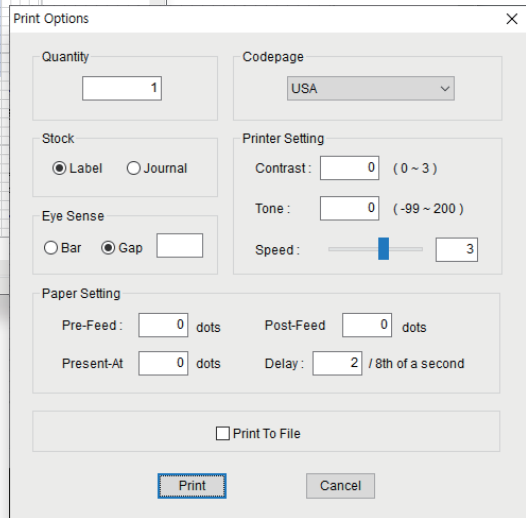
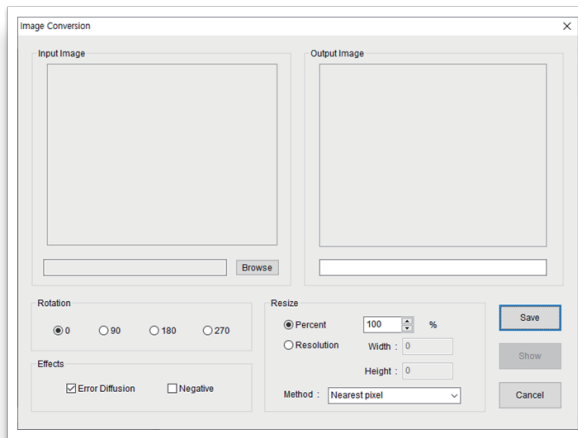


Figure 4

2. Menu

2-5 Graphics

2-5.1 Image Conversion



Menu	Description
Rotation	Sets the rotation value of the original image (0, 90, 180, 270)
Effects	<ul style="list-style-type: none">– Error Diffusion : This is a technique for displaying the contrast of an image by changing the size or pattern of dots.– Negative : Invert the colors in the image.
Resize	<ul style="list-style-type: none">– Percent : Set the size of the image in percentage.– Resolution : Set the image size to absolute size.– Method : Set how to change the image size. (Bilinear/Nearest pixel / Bicubic spline interpolation)